

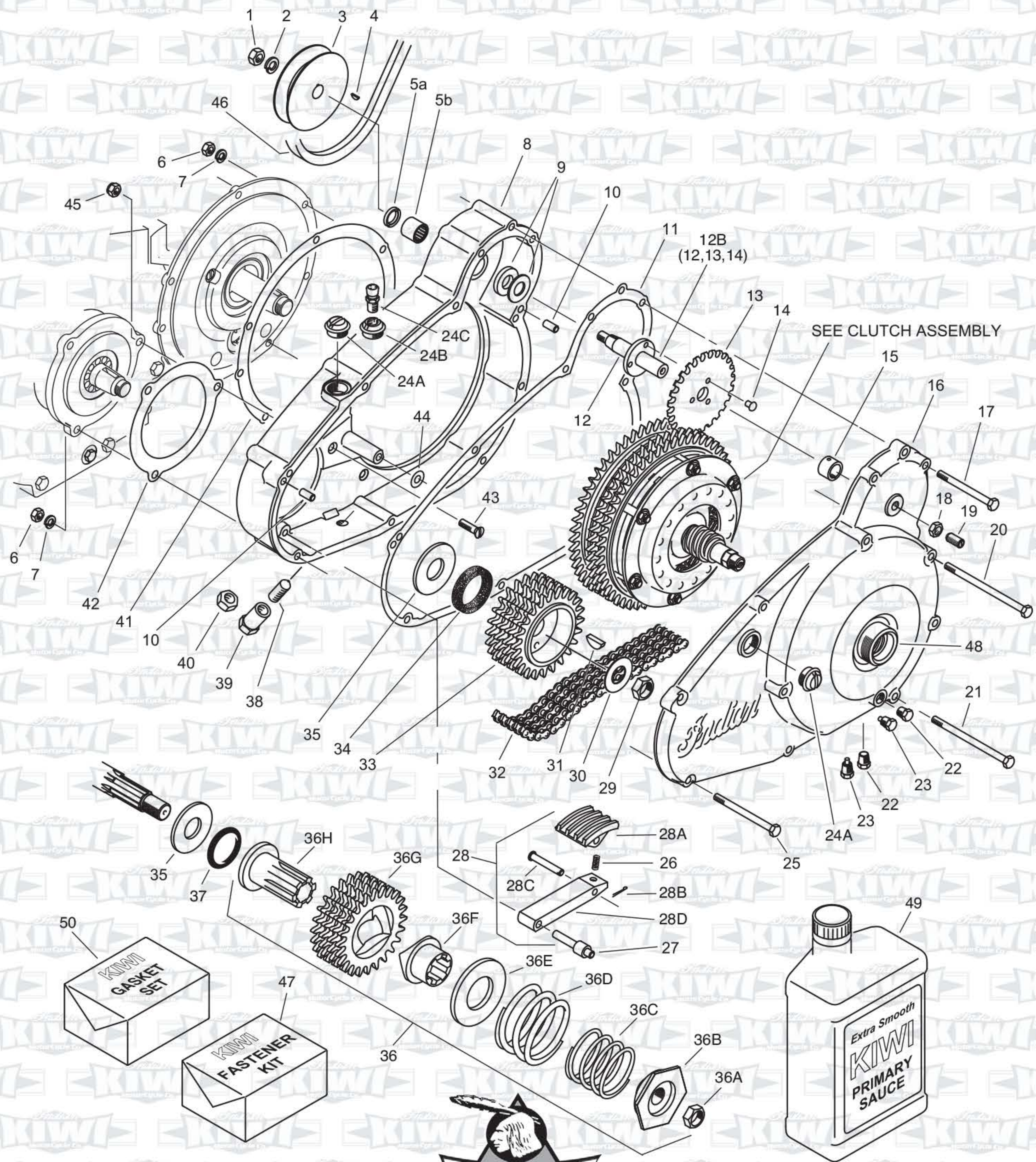
# PRIMARY DRIVE



No.	Part No.	Description	Year
1	606010-K	Nut and L/W kit: Pulley to shaft	34-53
2	606010-K	Nut and L/W kit: Pulley to shaft	34-53
3	41870	Pulley: Gene drive (tapered bore)	34-53
4	538003	Key: Pulley to gene drive shaft	34-53
5A	39313S	Seal: In inner cover	34-53
5B	39313B	Bearing: In inner cover	34-53
<p><b>Note:</b> This bearing and seal is an upgrade and replaces the bushing originally used in this application. This upgrade accepts the higher loading and eliminates a typical oil leak. Do NOT use the stock bushing as it will piss out oil</p>			
6	KI-10100	Bolt kit: Stainless steel	34-53
7	KI-10100	Bolt kit: Stainless steel	34-53
8	85371	Cover: Inner	34-39
8	86305	Cover: Inner	40-53
9	KI-10105	Thrust washer kit	34-53
10	16A68	Dowel pin (2)	34-53
11	85375	Gasket: Primary cover	34-53
11	85375-R	Gasket - Cometic	34-53
12	39324	Shaft	34-53
<p><b>Note:</b> Our shaft is superior to the stock shaft in order to give the sprocket more supporting area which lessens the chance of a common failure.</p>			
12B	39324C	Shaft/sprocket assembly (riveted together)	34-54
13	39323	Sprocket	34-53
14	19B188	Rivet set: Sprocket to shaft, set of 3	34-53
15	39314	Bushing: In outer cover	34-53
16	86769	Cover: Outer w/script	34-48
16	86769-P	Cover: Plain (no script)	34-53
16	336007	Cover: Outer	50-53
17	KI-10100	Bolt kit: Stainless steel	34-53
18	37112	Nut: Adjuster w/screw #19	34-53
19	37112	Screw: Adjuster w/locknut #18	34-53
20	KI-10100	Bolt kit: Stainless steel	34-53
21	KI-10100	Bolt kit: Stainless steel	34-53
22	661006	Plug: Oil level & drain	28-53
23	661006-M	Plug: Magnetic	28-53
<p><b>Note:</b> KIWI magnetic plugs are of a very high grade and do not degrade with heat. Not all magnetic plugs are created equal.</p>			

No.	Part No.	Description	Year
24A	661003	Plug: Inspection & filler	34-53
24B	661013	Filler plug: Primary	52-53
24C	50089	Breather valve	52-53
25	KI-10100	Bolt kit: Stainless steel	34-53
26	39321	Spring	34-53
27	39319	Pin: Lever pivot	34-39
27	42500	Pin: Lever pivot	40-53
28	39320-K	Shoe & lever assembly	34-39
28	42501-K	Shoe & lever assembly	40-53
28A	42501	Shoe	40-53
28B	636104	Cotter pin	40-53
28C	42502	Pin: Shoe	40-53
28D	42499	Lever	40-53
29	D180	Nut: Engine sprocket	22-53
30	20B47	Lock washer	22-53
31	538115	Key: Clutch hub	34-53
32	40822	Chain: Primary	34-53
<p><b>Note:</b> KIWI primary chains have a very high tensile strength, are pre stressed and are of very high quality.</p>			
33	39312	Sprocket: Engine	34-48
34	22B254	Cork: Engine sprocket	22-48
35	924016	.063 Thrust washer: Engine sprocket	22-53
35	924017	.070 Thrust washer: Engine sprocket	22-53
35	924018	.077 Thrust washer: Engine sprocket	22-53
35	924019	.084 Thrust washer: Engine sprocket	22-53
35	924020	.091 Thrust washer: Engine sprocket	22-53
35	924020-A	.095 Thrust washer: Engine sprocket	22-53
35	924021	.098 Thrust washer: Engine sprocket	22-53
35	924021-A	.100 Thrust washer: Engine sprocket	22-53
35	924022	.105 Thrust washer: Engine sprocket	22-53
35	924024	.112 Thrust washer: Engine sprocket	22-53
35	924023	.119 Thrust washer: Engine sprocket	22-53
35	924007	.124 Thrust washer: Engine sprocket	22-53
35	924006	.132 Thrust washer: Engine sprocket	22-53
35	37624	.140 Thrust washer: Engine sprocket	22-53
35	22B190	.148 Thrust washer: Engine sprocket	22-53
35	22B189	.154 Thrust washer: Engine sprocket	22-53
35	22B188	.160 Thrust washer: Engine sprocket	22-53
35	22B188-A	.166 Thrust washer: Engine sprocket	22-53
35	41027	.170 Thrust washer: Engine sprocket	22-53
36	815005-K	Sprocket assembly: Torque evener	50-53
36	815005-K	Sprocket assembly: Torque evener	50-53

# PRIMARY DRIVE



# PRIMARY - GENERATOR DRIVE

No.	Part No.	Description	Year
36A	1607001	Nut: lock	50-53
36B	614005	Nut: Spring retaining	50-53
36C	1809004	Spring: Inner	50-53
36D	809027	Spring: Outer	50-53
36E	927033	Washer: Spring seat	50-53
36F	1282002	Cam	50-53
36G	815005	Sprocket	50-53
36H	690004	Quill	50-53
37	763008	Seal: Torque evener	50-53
38	45086	Screw: Shoe adjusting	34-53
39	37432	Nut: Shoe adjuster lock, special	40-53
40	37351	Nut: Shoe adjuster lock	34-39
41	KI-10107	Gasket: Inner primary to transmission	34-53
41	KI-10107-R	Gasket: Cometic	34-53
42	KI-10106	Gasket: Inner primary to engine	34-53
42	KI-10106-R	Gasket: Cometic	34-53
<p><b>Note:</b> KI-10106-R &amp; KI-10107-R Cometic gaskets are made from a Foamet material and seal the best against irregular surfaces.</p>			
43	37108-K	Screw kit: Inner primary to engine & transmission	34-53
44	39355-R	Gasket: Cometic	34-53
45	37108-K	Screw kit: Inner primary to trans	34-53
46	40880	Belt: Generator drive	33-39
46	42603	Belt: Generator drive	40-53
47	KI-10100	Bolt kit: Stainless steel	34-53
48	23B73	Housing: Worm, clutch release	34-40
48	43442	Housing: Worm, clutch release	41-53
49	KI101243	Synthetic Oil: For all 3 speed trans and 4 speed trans and primaries	all yrs.
50	85375-RK	Cometic primary/trans gasket set	34-53

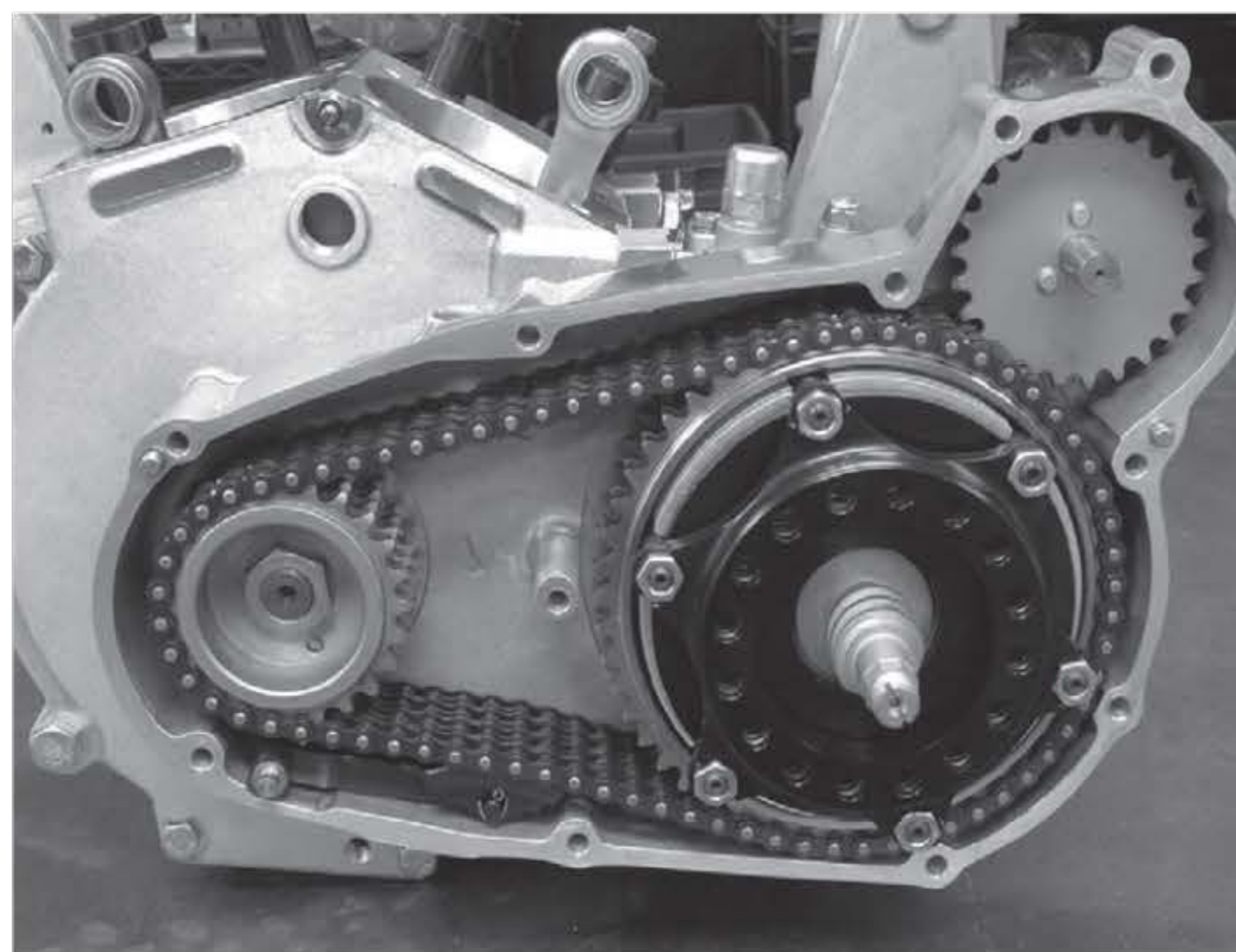
**661003-T**  
Inspection plug tool



**Rebuilding service:** We also offer rebuilding services for rebuilding your primary drive in our service dept.



*Mike out on a road test. No leaks, when done properly.*



*Primary drive with Kiwi anti chatter clutch*

