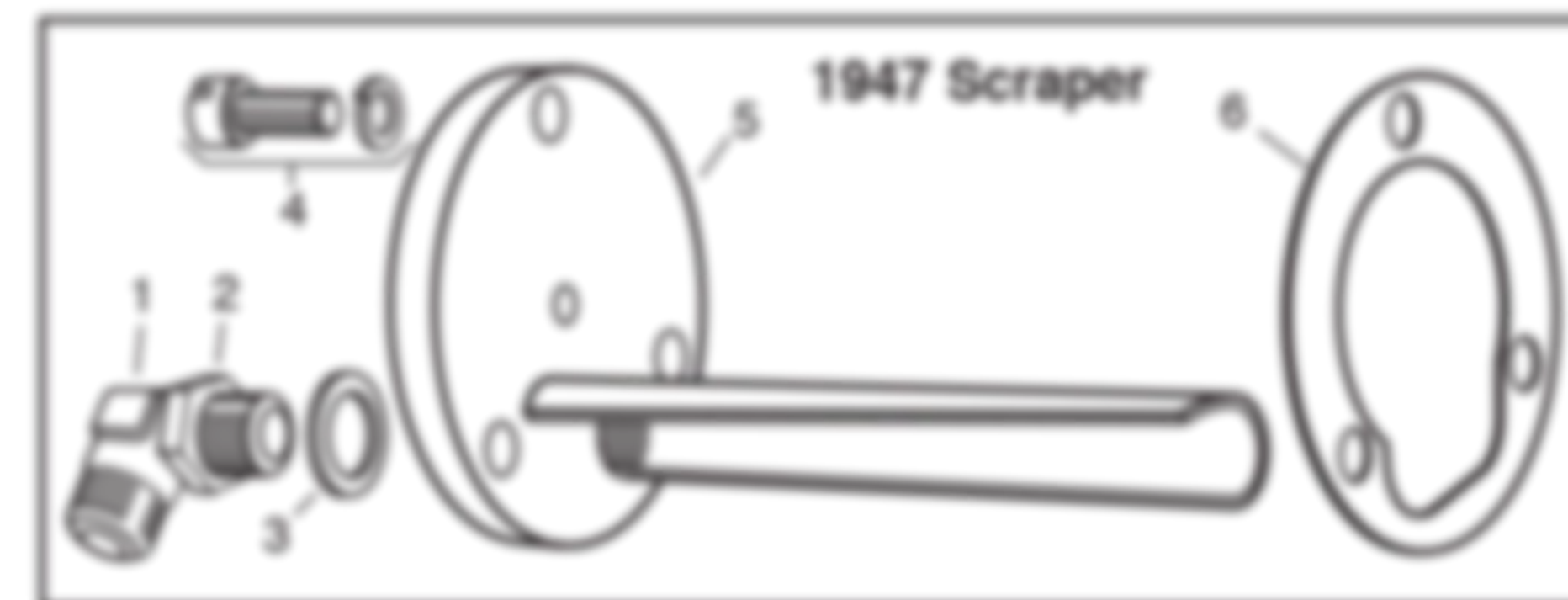




Oil Scrapper 1947

No.	Part No.	Description (Scrapper)	Year
1	24B16	Elbow	47-53
2	24B17	Nut: Elbow lock	47-53
3	A21120	Washer: Sealing	47-53
4	751609-K	Screw kit: Scrapper to crankcase	1947
5	182002	Scrapper	1947
6	454016-S	Gasket: Scrapper to crankcase	1947
6	454016-SR	Gasket: Cometic	1947

Note: Early 1948 models came with a 182002 scrapper



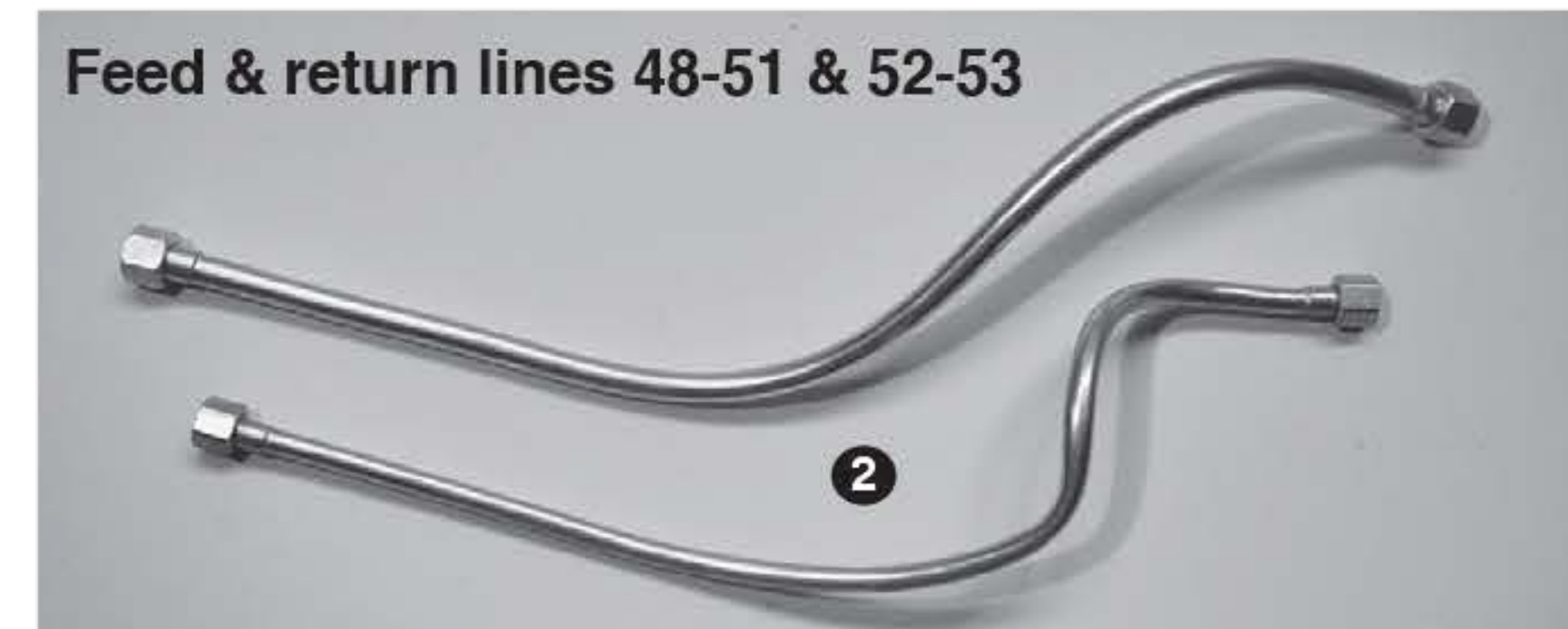
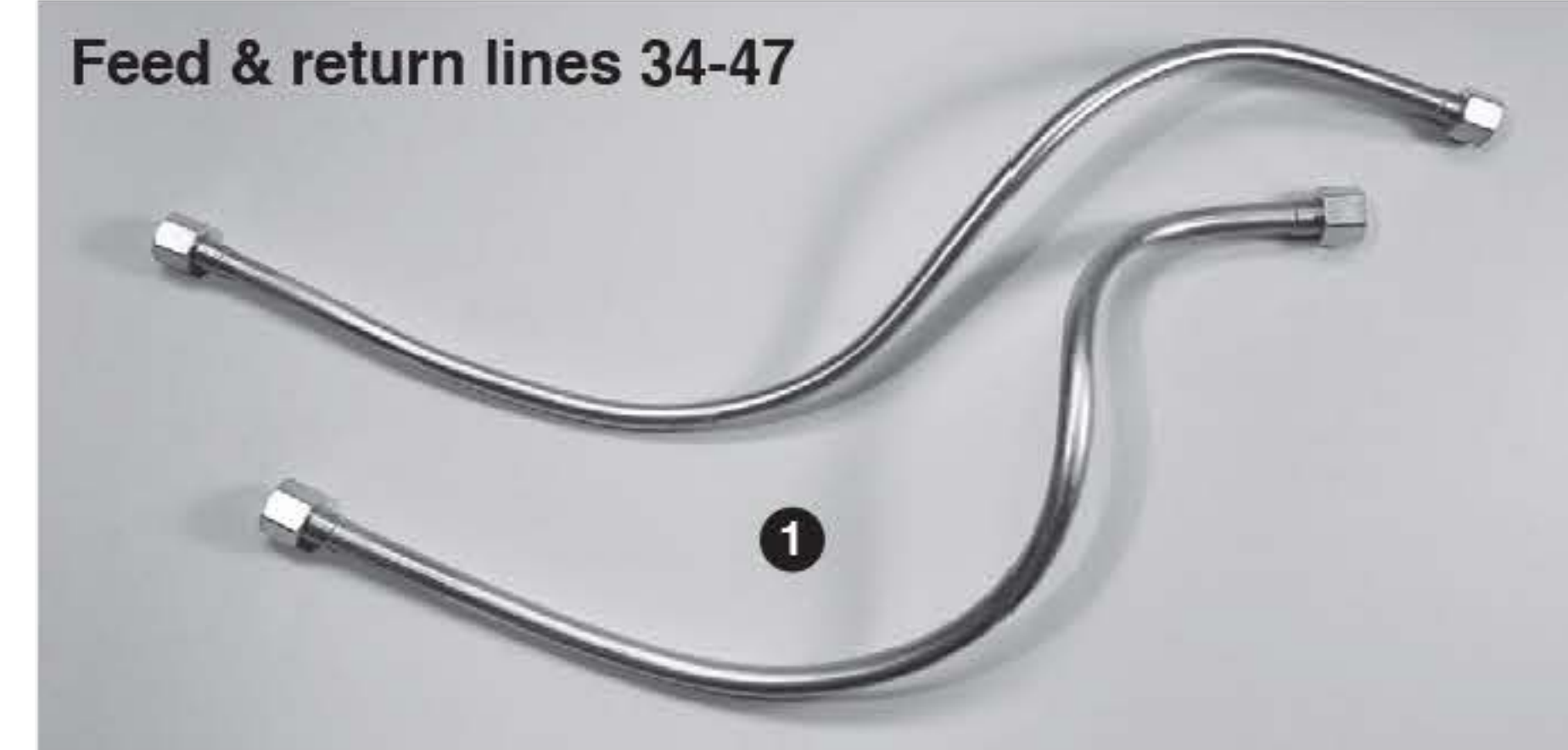
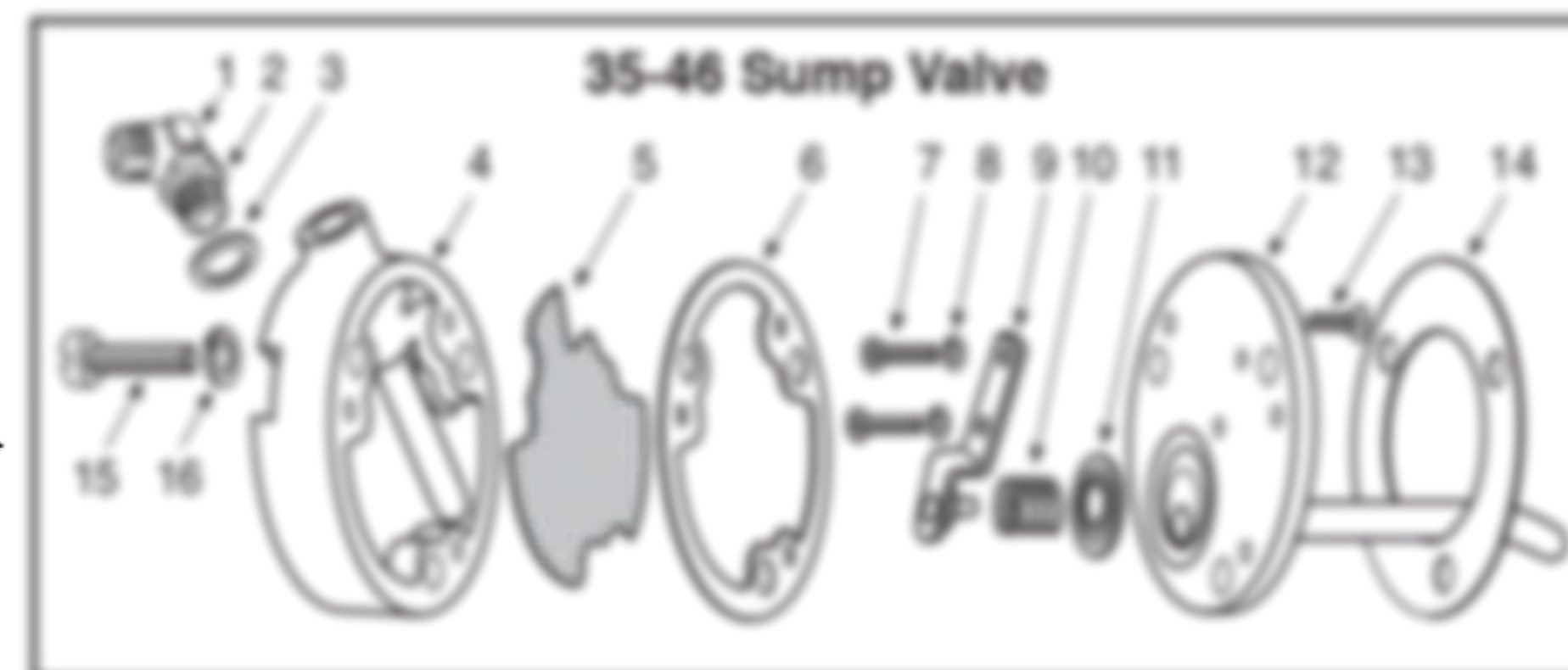
Oil Pick-up 48-53

No.	Part No.	Description (Scrapper)	Year
1	24B16	Elbow	48-53
2	24B17	Nut: Elbow lock	48-53
3	A21120	Washer: Sealing	48-53



Oil Sump Valve 35-46

No.	Part No.	Description (Sump Valve)	Year
1	24B16	Elbow	22-53
2	24B17	Nut: Elbow lock	22-53
3	A21120	Washer: Sealing	22-53
4	39888	Housing	35-46
5	43275	Screen	35-46
6	39891	Gasket: Housing	35-46
6	39891-R	Gasket: Housing, Cometic	35-46
7	43115-K	Screw: 8-32 x 1/4"	35-46
8	43115-K	Lock washer: Split #8	35-46
9	43115	Bracket: Spring support	35-46
10	40208	Spring: Sump valve disc	35-46
11	41530	Disc: Sump valve	35-46
12	43277	Plate w/tube	35-46
13	750205-K	Screw kit: 8-32 x 1/4" FH	35-46
14	454016	Gasket: Sump	35-46
14	454016-R	Gasket: Sump, Cometic	35-46
15	751612-K	Screw kit: 1/4-20 x 1/4"	35-46
16	751612-K	Screw kit: Split LW 1/4"	35-46



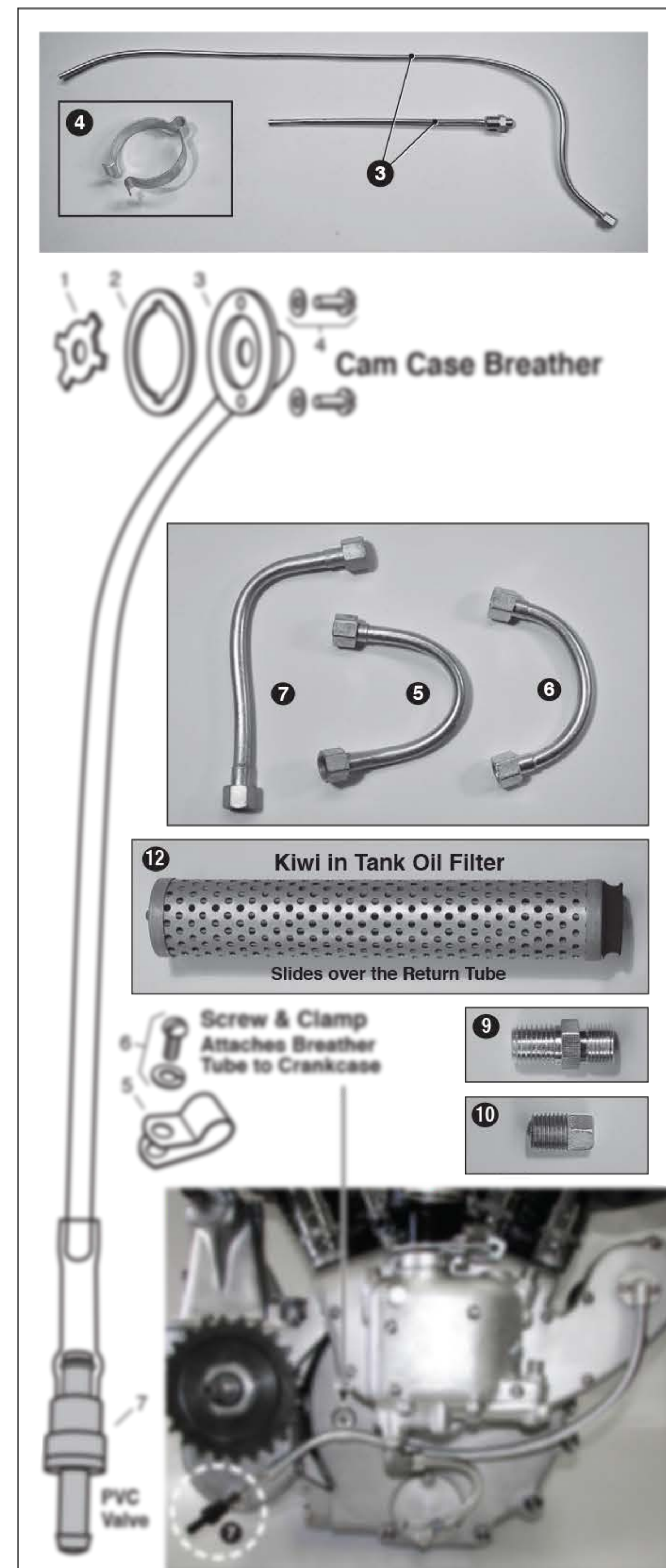
Oil Lines, Filter & EZ-Drain

No.	Part No.	Description (Oil Lines, Filter)	Year
1	42568	Feed & return lines: Tank, Pr.	34-47
2	568016	Feed & return lines: Tank, Pr.	48-51
2	568031	Feed & return lines: Tank, Pr.	52-53
3	41915	Breather line: Tank, inner & outer set	37-51
3	568033	Breather line: Tank to frame, inner and outer set	52-53
4	D-29765	Clip: Breather tube to frame (2)	37-51
5	41375	Tube: Sump to pump	38-46
6	568012	Tube: Scrapper to pump	1947
7	568018	Tube: Crankcase to pump	48-53
Note: 568018 tube also fits early 1948 model that came with a 47 style scrapper.			
8	40153	Nipple: Return, in tank	33-53
9	599005	Nipple: Feed, in tank	33-53
10	36B269	Plug: Tank drain	all
11	KI-10602	EZ drain: Oil tank drain	all
Note: The EZ drain is a must for every Indian and makes oil changes easy and hassle free. It takes the place of the messy 36B269 drain plug.			
12	KI-10605	Filter: Internal, inside oil tank	all



Breather & PVC Valve

No.	Part No.	Description	Year
1	40512	Disc: Breather w/ hole	33-53
1	40512-R	Disc: Breather w/o hole	33-53
2	28B123	Gasket: Breather	33-53
2	28B123-R	Gasket: Cometic	33-53
3	42843	Breather tube	33-53
3	42843-R	Breather tube: Suits Kiwi limited edition Kiwi crankcase mounted breather	33-53
4	754405-K	Screw and washer kit: 10-32 x 1/4" RHMS	33-53
5	43584	Clamp: Tube to crankcase	44-53
6	751304	Screw: Clamp to crankcase, special 10-24 x 1/4" FH	44-53
7	42843-B	Kiwi silent PCV breather valve kit: This is a must do upgrade that allows the crankcase to fully vent to reduce oil consumption and oil leaks. Eliminates #1	33-53



Location of Oil Tank Fittings as Viewed Sitting on the Motorcycle

Fitting ID	Fitting
A	Return
B	Feed
C	Breather
D	EZ Drain
D	Plug

KIWI EZ Oil Drain
Part No. KI-10602

Waste Oil

OPEN
Oil drains through hose into receptacle. No Mess. No Spills. *Environmentally Desirable!*

CLOSED
SNAP OFF KEY
Oil plug immediately seals Closed. No Mess. No Spills.